

	Con Lot		Con Lot
Dobbie E R, Parkhill	f 18 18	Johnson Clark, Sylvan	f 16 18
Donaldson James, Sable	t 11 25	Johnson H D, Strathroy	f 21 6
Dowker Caleb, Parkhill	f 20 16	Johnson W H, Sylvan	t 21 9
Downing M M, Thedford	f 9 13	Johnson John, Bornish	faber12
Dumaw Rol, Sylvan	t 15 16	Johnson John A, Sylvan	f 21 10
Eberly David, Sylvan	f 21 15	Johnson Neil, Bornish	faber12
Eberly Thos, Sylvan	f 21 15	Johnson Thos, Sylvan	f 19 22
Elliott John, Parkhill	f 21 18	Johnson Wm, Sylvan	f 21 9
Elliott And, Parkhill	f 21 24	Kean Michael, Sylvan	f 18 22
Elliott John, Parkhill	f 21 17	Keane John, Sylvan	f 18 22
Elliott Thos, Parkhill	f 19 10	Kearns Thos, Bornish	faber10
Elliott Wm, Parkhill	f 18 9	Kelly Wm, Parkhill	faber24
Emery Geo, Parkhill	t 20 7	Kilgallin Pat, Bornish	f 13 9
Evans Wm J, Keyser	f 7 11	Kirpatrick Wm, Sylvan	f 16 16
Fair Josias, Sable	f 9 13	Knight Philip, Sylvan	f 21 23
Fairbank Chas, Parkhill	f 20 16	Lawson Wm, Lamont	t 9 24
Faust John, Sylvan *	t 21 28	Lease Fred, Sylvan	t 21BF
Fletcher Duncan, Lamont	f 21 3	Lease John Sylvan	t 21BF
Frazer Donald, Lamont	f 9 18	Loomis Oscar, Sylvan	f 14 16
Galbraith Angus, Sable	f 10 11	Loomis Stephen, Sylvan	f 14 16
Galbraith John, Springbank	f 9 3	Love Dugald, Sable	f 10 9
Galbraith Lach, Springbank	f 9 4	Love John jr, Sable	f 10 9
Galbraith Donald, Lamont	f 21 4	Love John sr, Sable	f 10 7
Gilbert John, Sable	t 10 15	Lyell George, Arkona	t 8 18
Gilbert Wm, Sable	t 10 15	Lyman Robt, Sylvan	f 16 3
Gleeson John, Bornish	f 12 6	Lyman Sylvester, Parkhill	f 16 3
Gordon James, Sylvan	t 18 24	McAdam Andrew, Sable	t 10 13
Gott David, Lamont	f 10 20	McAdam Jno jr, Sable	t 10 3
Gott Edward, Lamont	f 10 19	McAdam Jno sr, Lamont	f 11 16
Gray John, Parkhill	t 20 8	McCormick Arch, Bornish	f 13 6
Gray Robt, Parkhill	f 16 10	McCormick Don, Bornish	f 13 6
Guy James, Sable	f 9 12	McCormick John, Bornish	f 14 6
Hall And, Sylvan	f 21 13	McCubbin John, Sable	f 11 6
Hall James, Sylvan	f 20 25	McCuish Murdoch, Sylvan	f 14 15
Hall John, Sylvan	f 21 11	McDonald Angus, Sylvan	f 16 5
Hall John T, Sylvan	f 21 13	McDonald Angus, Sylvan	f 13 15
Harris Elijah, Sylvan	f 20 22	McDonald Arch, Sylvan	f 21 8
Harris Joseph, Sylvan	f 20 22	McDonald Don, Sable	f 11 11
Harrison John, Parkhill	f 20 19	McDonald Don, Bornish	faber 9
Harvey Arch, Sable	f 11 10	McDonald Don, Bornish	f 15 12
Harvey Dun, Springbank	f ABC3	McDonald E, Bornish	faber 9
Haskett Rich, Parkhill	f ABC18	McDonald John, Parkhill	t aber 9
Haskett Thos, Parkhill	f ABC19	McDonald John, Bornish	f 13 11
Haskett Wm, Parkhill	f ABC19	McDonald Murdoch Lamont	f 10 15
Hastings Wm, Parkhill	f 20 4	McDonald Ronald, Bornish	t 12 15
Hays Chas, Parkhill	t 18 4	McEachern John, Bornish	f 13 16
Hays James, Parkhill	f 19 16	McEachern Don, Bornish	f 12 1
Hendrick Geo, Keyser	t 7 7	McEwen Duncan, Lamont	f 9 17
Hendrick John, Keyser	f 7 8	McGregor D, Springbank	faber X
Herrington J, Keyser	f 7 9	McGregor Dun, Springbank	f 9 X
Hill Alex, Lamont	f 11 18	McGregor Dun, Bornish	faber 5
Hill Wm, Lamont	f 11 19	McInnes Finlay, Lamont	f 11 21
Hocken Samuel, Parkhill	f 14 4	McIntosh Arch, Lamont	t 21 6
Holmes Jacob jr, Sable	t 9 14	McIntosh John G, London	f 7 18
Houston John, Parkhill	f 19 7	McIntosh W J, London	f 7 18
Hudson And, Plainville	f 20 21	McIntosh Angus, Bornish	f 14 5
James Chas, Sylvan	i 21 11	McIntosh Angus R, Lamont	f 11 2
James Albert, Sylvan	f 18 23	McIntosh Donald, Parkhill	t 18 14
James Edward, Parkhill	f 18 12	McIntosh Dugald, Bornish	f 14 5
James John, Parkhill	f 19 15	McIntosh Dugald, Parkhill	t 12 18
Janey George, Lamont	f 11 21	McIntosh John, Bornish	t 15 3
Jennison Henry, Parkhill	f 20 14	McIntosh Lachlan, Parkhill	f 15 11

WALL PAPER, LARGEST ASSORTMENT LATEST STYLES—GREER & WIGMORE, 206 Dundas Street, London.

	Con Lot		Con Lot
McIntosh Mal, Parkhill	f 14 10	McLeod Neil, Lamont	f 21 5
McIntyre Arch, Bornish	f 14 6	McMillan Alex, Bornish	f 12 12
McIntyre Ron, Lamont	f 21 4	McMillan Angus, Sable	f 10 10
McIntyre Hugh, Parkhill	f 18 6	McMillan Neil, Bornish	f 12 12
McIntyre Donald, Parkhill	t 18 6	McNeil Malcolm, Sable	f 10 3
McIntyre Chas, Bornish	f 13 8	McPherson Angus, Springbank	f aber 4
McIntyre Hector, Parkhill	f 14 12	McPherson Donald, Sable	f 10 4
McIntyre John, Lamont	f 21 BF	McPhie Angus, Bornish	f 13 15
McIntyre L C, Bornish	f 13 3	McPhie Angus, Sable	t 11 9
McIntyre Neil, Parkhill	t 20 15	McPhie Angus, Bornish	f 13 15
McIntyre Peter G, Lamont	f 21 BF	McPhie Donald, Sylvan	f 12 15
McIntyre Ronald, Bornish	f 12 7	McPhie Arch, Bornish	f 12 9
McIsaac D, Bornish	f 13 7	McPhie Donald, Bornish	t 12 13
McIsaac Finlay, Parkhill	f 18 6	McPhie John, Bornish	f 13 14
McKellar Donald, Sable	f 10 16	McPhie Neil, Sable	t 11 9
McKellar John, Sable	t 10 12	McRoberts C H, Lucan	t 20 3
McKenzie Donald, Sable	f 10 5	McVicar Dun, Parkhill	f 13 10
McKenzie Don, Parkhill	t 20 10	McVicar John, Lamont	i 21 3
McKenzie Wm, Manitoba	f 17 3	Mackey Jas D, Sylvan	f 13 13
McKenzie Wm, Sable	f 11 4	Mackey Mathias, Sylvan	f 13 17
McKenzie Wm R, Parkhill	f 12 10	Magladerm T, Parkhill	f 20 4
McKichan John, Lamont	f 10 21	Marsh Wm jr, Arkona	f 7 22
McKillop Neil, Bornish	faber 7	Marsh Wm sr, Arkona	f 7 22
McKinnon Donald, Parkhill	f 15 7	Marshall John, Arkona	f 7 21
McKinnon J, Bornish	faber16	Mathers Geo, Parkhill	f 20 2
McKinnon N, Bornish	faber16	Mathers John, Sylvan	f 19 21
McKinnon John, Parkhill	f 18 6	Meade Dav, Sylvan	t 21 16
McKinnon R, Bornish	faber16	Meriam Elijah, Sylvan	f 21 26
McLachlan Angus, Sable	f 11 11	Meriam Warren, Sylvan	f 21 26
McLachlan Arch, Springbank	f 7 1	Monk Neil, Bornish	faber15
McLachlan Arch, Lamont	f 21 3	Monteith John, Parkhill	f 14 7
McLachlan —, Sylvan	f Sylvan1	More Michael, Arkona	f 7 23
McLachlan D sr, Sylvan	f 21 5	Morrison Angus, Bornish	faber 4
McLachlan D jr, Sylvan	t 21 7	Morrison Angus, Bornish	faber13
McLachlan Peter, Lamont	f 21 2	Morrison Angus, Parkhill	f 13 5
McLarty Dun, Parkhill	f 15 20	Morrison Donald, Bornish	t 12 5
McLean Arch, Lamont	t 21 BF	Morrison D, Bornish	faber13
McLean Hector, Bornish	f 12 16	Morrison John, Parkhill	t 14 6
McLean Neil, Bornish	f ABC 6	Morrison Malcolm, Bornish	t 12 5
McLean Rod, Bornish		Morson, Thos F, Sylvan	f 15 13
McLeish Hector, Watford	f 11 15	Mosher Hillary, Parkhill	f 18 15
McLeish Alex, Springbank	f 9 6	Mosher John S, Parkhill	f 17 15
McLeish Angus, Sable	f 10 5	Mosher John, Parkhill	f 18 15
McLeish Arch, Springbank	t 9 7	Mosher Lewis, Parkhill	t 17 12
McLeish Arch, Sable	f 11 15	Mulvaney Terrance, Parkhill	f 18 6
McLeish Donald, Keyser	f 7 7	Murray Robt, Sylvan	t 21 BF
McLeish Donald, Keyser	f 8 5	Nairn Alex, Toronto	f 20 8
McLeish John sr, Keyser	f 8 6,7	Niblock John, Parkhill	f 19 3
McLeish John, Keyser	f 7 8	Niblock Joseph, Parkhill	f 20 3
McLellan John, Bornish	f 12 3	Niblock Jas, Parkhill	f 18 6
McLellan John, Bornish	f 14 9	Niblock Robt, Parkhill	t 6 15
McLellan Murdoch, Bornish	f 12 3	Niblock Thos, Parkhill	f 19 4
McLellan Neil, Bornish	f 12 4	Nichols Peter, Parkhill	f 18 9
McLellan A, Bornish	f 13 4	Nichols Ira, Lamont	f 21 1
McLellan Neil, Bornish	f 12 4	Nichols John, Arkona	f 9 21
McLeod Arch, Parkhill	f 14 10	Nicholson Robt, Sylvan	f 17 19
McLeod Simon, Parkhill	f 12 17	Nicholson Stephen, Sylvan	f 17 18
McLeod Arch, Parkhill	faber10	Nicholson Thos, Sylvan	f 17 19
McLeod Donald, Sable	f 11 5	Norton James, Lamont	f 9 18
McLeod James, Parkhill	f 17 10	Nundy David, Arkona	f 9 20
McLeod John, Parkhill	f 16 12	Nutt Horace, Sylvan	f 14 14
McLeod Murdoch, Parkhill	f 19 12	Nutt Martin, Sylvan	t 21BF

SUN LIFE ASSOCIATION CO. A STRONG, PROSPEROUS CANADIAN COMPANY.

	Con Lot		Con Lot
Nutt Miles, Sylvan	f 11 14	Squires Wm, Parkhill	t 17 3
Oliver Geo, Keyser	f 8 10	Steel Don, Bornish	f 13 13
Orr Thos, London	f 15 8	Steel Don jr, Bornish	f 13 12
O'Henly John, Parkhill	f abcr11	Steele Don, Parkhill	f 14 13
O'Neil Wm, Arkona	f 8 15	Steel Peter, Bornish	f 13 12
Pascoe Wm, Sylvan	f 20 24	Stewart Ed, Parkhill	t 18 3
Patterson Dun, Keyser	f 7 5	Stewart John, Parkhill	f abcr22
Patterson John, Sylvan	f 21 20	Stewart Peter, Parkhill	f ABC 21
Patterson John, Keyser	f 7 4	Stewart Jas, Keyser	f 7 10
Patton Jas jr, Parkhill	f 15 11	Tait Thos, Parkhill	f abcr 24
Patton Jas sr, Parkhill	f 16 11	Tanton Dan, Parkhill	t 14 3
Peck Sam A, Sylvan	f 16 14	Tanton Thos, Parkhill	t 19 8
Pedden Wm, Sable	f 11 14	Teepie Chas, Sable	f 11 13
Pedlar Wm, Parkhill	f 14 11	Teepie Durham, Sable	f 11 13
Peterkin Don, Parkhill	f 17 9	Teepie Geo, Sable	f 11 13
Peterkin Wm, Parkhill	f 12 9	Teepie Wm, Sable	f 11 12
Pettitt Elisha, Sylvan	f 21 14	Telfer Walter, Parkhill	f 19 19
Pippen Hy, Parkhill	t 20 7	Tideman Fredk, Sylvan	t 12 17
Plewes Jas, Parkhill	f 187,8	Tierney John, Parkhill	f 18 6
Plewes Thos, Parkhill	f 18 7	Thompson Jas, Sylvan	f 20 20
Poore Chas, Sylvan	f 20 23	Thompson John, Sylvan	f 18 20
Powell Thos, Parkhill	f 18 5	Thompson David, Sylvan	f 19 24
Powell John, Galt	f 18 3	Thompson Elijah, Sylvan	t 20 24
Randall Arthur, Sylvan	f 21 17	Thompson Geo, Sylvan	f 19 24
Randall Dan, Sylvan	f 21 BF	Thompson John, Sylvan	f 21 12
Randall Eli, Sylvan	t 21 24	Thompson John, Sylvan	f 20 24
Randall Jas, Sylvan	f 21 16	Thompson Thos, Sylvan	t 19 24
Randall Wm jr, Sylvan	f 16 18	Thompson Wm, Sylvan	f 21 12
Randall Wm J, Sylvan	t 16 18	Tierney John, Parkhill	f 18 6
Randall Sam, Wyoming	f 21 15	Turner Jas, Parkhill	f 19 13
Randall Wm, Sylvan	t 21 BF	Vernon Moses, Sylvan	f 17 17
Randall Wm H, Sylvan	t 19 15	Vernon Wilson, Sylvan	f 17 16
Ranks Geo, Arkona	f 7 23	Vernon Neison, Parkhill	f 16 9
Ridley John, Parkhill	t 20 11	Wade Chas A, Parkhill	f 17 4
Riggs John, Keyser	f 8 14	Wade Ralph, Parkhill	f 18 6
Riggs Robt, Keyser	f 7 12	Wade Robt, Parkhill	f 17 4
Riggs Thos, Arkona	f 8 13	Walz John, Arkona	f 7 21
Robinson W C, Sylvan	t Sylvan2	Walsworth Peter, Sylvan	f 16 13
Ronald Alex, Parkhill	f 17 14	Watts Chas, Sable	t 11 10
Rosenberry P B, Arkona	f 21 BF	Watson Hugh, Bornish	f abcr 8
Rowe Geo, Kerwood	f 21 26	Watson Don, Bornish	t abcr 9
Rowe Rob	t 19 16	Watson Thos,	f 9 14
Rutherford Thos, Sylvan	f 14 17	Waun Jas, Sable	f 11 8
Ryan Jas, Sylvan	f 20 21	Waun Jos E, Parkhill	f 15 19
Ryan Pat, Sylvan	f 18 21	Waun Leonard, Sylvan	t 21 6
Sadler Geo, Sylvan	f 17 20	White Arch, Keyser	f 8 5
Sadler Jas, Sylvan	f 17 20	White John, Sylvan	f 21 BF
Sadler Thos, Sylvan	f 17 21	Whitelaw Alex, Sylvan	f 21 13
Salter Reuben, Parkhill	f 19 11	Wilkie Alex, Keyser	f 7 2
Saul Hy, Arkona	f 7 21	Wiley Nathaniel, Keyser	f 8 11
Sawdon Thos, Parkhill	t 19 19	Winn Geo, Sylvan	f 18 4
Saynor Wm, Sylvan	f 21 BF	Wilson Isaac, Sylvan	t 21 27
Scarborough Hy, Parkhill	t 19 13	Wisner J L,	f 16 17
Schofield Jonas, Parkhill	f 20 13	Young Daniel, Parkhill	t 20 16
Scott Wm, Sylvan	f 21 21	Young Jas, Parkhill	t 19 10
Shoults John, Parkhill	f 19 9	Zavitz Jos, Lamon	f 9 1
Shoults Rich, Parkhill	f abcr 20	Zavitz Hy, Lamon	f 9 25
Smith John, Sylvan	f 21 BF	Zavitz H, Lamon	f 21 1
Smith John B, Sylvan	f 21 BF	Zavitz Wm, Lamon	f 9 25
Sowden W N, Parkhill	f 15 10		

ELLIOTT BROS., GROCERS AND WINE MERCHANTS, 155 DUNDAS STREET, LONDON.

## TOWNS & VILLAGES

—IN THE—

# COUNTY OF MIDDLESEX,

Giving the situation, population, and names of the principal business places.

### ADARE.

A village on the London and Clinton gravel road in the township of McGillivray. Distance from Lucan on the Grand Trunk 6 miles. Mail tri-weekly. Population about 150.

Bayhen Patrick, horse dealer.  
Drummond Matthew, postmaster.  
Coughlin F A D, cattle dealer.  
Lewis Wm, blacksmith.  
Maguire Wm H, carpenter.  
Thompson Jas, carpenter.  
Thompson Jas, wagonmaker.

### ADELAIDE.

A village on the London and Sarnia gravel road, township of Adelaide. It contains two churches, a saw and a grist mill. Distance from Strathroy on the Sarnia branch of the G. T. R. 7 miles; from London 25 miles. Mail daily. Population about 200.

Austin Edward, builder.  
Brock Thos, general store.  
Clifford Chas, hotelkeeper.  
Forsyth Robt, town treasurer.  
Freele Jas, shoemaker.  
Gibson John, blacksmith and wagon-maker.  
Hamilton Jas C, hotelkeeper.  
Hoare John S, postmaster and general store.  
Hudson & Gibson, blacksmiths.  
Kennedy Rev. John, Episcopalian.  
Miller Wm, town clerk, marriage license issuer.  
Turner Rev Wm S, Methodist.  
West John F, shoemaker.  
Whitlock Wm, shoemaker.  
Whittaker Richd, grist and saw mill.

### AILSA CRAIG.

An incorporated village between St. Marys and Sarnia on the G. T. R., on the town line of East Williams and McGillivray. The Great Northwestern Telegraph Company has an office here.

Distant from London 24 miles, from Sarnia 48. Mail daily. Population about 1,100.

Alexander Bros, foundry.  
Alexander & Robson (Wm M Alexander, Wm Robson), grain dealers.  
Allen Jas, tinsmith.  
Anderson Jas R, physician and surgeon.  
Arnold Geo D, general store.  
Atkinson Frank, cooper  
Bell John, printer.  
Bowman Isaac, hairdresser.  
Bowman John, butcher.  
Brown Thos, shoemaker.  
Brownley A, watchmaker, jeweller and fancy goods.  
Cameron & Morgan (J S Cameron, John Morgan), grocers.  
Cassidy John J, agent.  
Clement Francis, shoemaker.  
Cooper & Jarman, general store.  
Davis Henry, tailor.  
Drought Wm, Queen's hotel.  
Fitzgerald P J, harnessmaker.  
Gilchrist A, drover.  
Gillies Saml & Sons, saw and planing mill.  
Graham Wm, blacksmith and wagons.  
Gray Dun, general store.  
Gunn Bros (John & A), flaxmill.  
Gunn & Grant (Hector Gunn, John Grant), general store.  
Gunn Hector (Gunn & Grant).  
Gunn John, physician.  
Grant John (Grant & Gunn).  
Hall R E, grocer, boots and shoes.  
Hall W T, dry goods.  
Hamilton G J, clerk second division court.  
Harner Miss Hannah, dressmaker.  
Harrison John, grocer.  
Hay & Jones (S Hay, David Jones), bankers and produce merchants.  
Hay S, postmaster, stationery, etc.  
Hay T, chemist and druggist.  
Higgins Rev John, Baptist.  
Hodgins M W, cabinetmaker and undertaker.

SUN LIFE ASSOCIATION CO.—ASSETS ABOUT \$100,000,000. SURPLUS ABOUT \$600,000. INCOME ABOUT \$200,000

Kennedy Hugh, dentist.  
Lambert Richd, woolen mill.  
Lambert Wm, flour and grist mill.  
McCallum Malcolm, merchant tailor.  
McAlpine Mrs E, dressmaker.  
McDonald Bros (Geo S, John S), carriage and wagons.  
McDonald Geo S (Geo S, John S).  
McDonald John (John S, Geo S).  
McFarlane G, cattle dealer.  
McKay & McKay (J H McKay, Wm M McKay), general store.  
McKay John H (J H McKay, Wm M McKay).  
McKay Wm M (Wm M McKay, J H McKay).  
McKeith —, shoemaker.  
Melville Chas, harnessmaker.  
Mihell & Co (G A Mihell, J T Owen), bankers.  
Mihell G A (Mihell & Co.)  
Mills M K, handle factory.  
Munemaker Daniel, pumpmaker.  
Munro H C, Farmers' hotel.  
Munroe A N & P J (Angus N, Peter J), Ailsa Craig hotel.  
Munro A N (A N, P J).  
Munro P J (Peter J, Angus N).  
Overholt Peter, baker.  
Owen J T (Owen & Mihell).  
Paul A H, baker and confectioner.  
Perry & Son, provisions.  
Pemberton Geo, butcher.  
Price O E, general store.  
Rennie Rev John, Presbyterian church.  
Ridley Rev John, Methodist church.  
Robinson Chas, billiards.  
Rosser Jos, hardware.  
Shipley Jas, cattle dealer.  
Shoebottom Wm M, groceries and provisions.  
Stevenson Thomas, cabinetmaker and undertaker.  
Stewart Archd, drover.  
Stewart A D, M D, physician and surgeon.  
Stewart John jr, drover.  
Stewart Peter, Drover.  
Great Northwestern Telegraph Co'y.  
Telfer J S, merchant tailor.  
Tibeando J W, Agent Grand Trunk Railway.  
Wilson Mrs M E, milliner.

**AMIENS.**

A village in the township of Adelaide. Distant from Strathroy on the Sarnia branch of the G. T. R. 6 miles. Mail tri-weekly. Population about 60.  
Adams John, shoemaker.  
Carroll Henry, hotel.  
Culter John, blacksmith.  
McKay Francis, bricklayer.

**APPIN.**

A small village on the G. T. R., in the township of Ekfrid. There is a telegraph office here, operated by the Great Northwestern Telegraph Company. It is 22 miles from London. Mail daily.  
Campbell Angus, J. P., commissioner.  
Chisolm Alex, sewing machine agent.  
Connely Chris, station master.  
Dewitt & Meliberts, general store and postoffice.  
Dobie James, blacksmith.  
English John, wagonmaker.  
Holmes Wm, cabinetmaker.  
Hughes & McIntyre, blacksmiths.  
Hyndman Alex, grain merchant.  
McGregor Bros, general store.  
McNaughton Robt, hotel.  
McRoberts John & Son, saw mill.  
Milburn Walter, wagonmaker.  
Mullin John, hotel.  
Penhall Rev Wm, Canada Methodist.  
Prudham Thos, constable.  
Raymond Miles, painter.  
Simpson John, shoemaker.  
Swanson Geo, tailor.

**ARVA.**

(St. John.)

A small village in the township of London. It has two churches, one grist mill, one woolen mill and two hotels. It has a telegraph office operated by the Great Northwestern Telegraph Company. It is 6 miles from London and 11½ miles from Lucan. There is a daily mail. Population 200.  
Allen Geo, wagonmaker.  
Anderson Jas, thrasher.  
Bernard Frank, mail carrier.  
Bernard Walter, blacksmith.  
Bice Dr Mark, physician.  
Brooks Edwin, hotel.  
Colling Rev Jos, Methodist Church of Canada.  
Cummings Alfred, bailiff.  
Dennis Jos H, wagonmaker.  
Drum Pat, plasterer.  
Edwards Elijah, harnessmaker.  
Elliott Geo, tavern.  
Elliott Robt, postmaster and general store.  
Elliott Thos, hotel.  
Grant Jas, township clerk and issuer of marriage licenses.  
Hodgins Jas H, butcher.  
Hawkins & Westlake, grist mill.  
McNab John, blacksmith.  
Metzger Jno G, tailor.  
Sifton Bamlet E, J. P.  
Stiles Thos, general store.

Swarts Jas, teamster.  
Thompson Wm B, shoemaker.  
Walker Geo, J. P.  
Wyatt Jrs, wagonmaker.  
Wyatt Wm H, blacksmith.  
Vanse Ruben, carding mill.

**AVON.**

A village in the township of North Dorchester. It is 17 miles from Ingersoll, a station on the G. T. R., and 7 miles from Springfield on the Canada Southern. Daily mail. Population nearly 200.  
Andrew Jno H, wagonmaker.  
Andrew Phil, school teacher.  
Burdick Caleb T, school teacher.  
Collins David M, carpenter.  
Griffin Rev M, Episcopal Methodist.  
Herron Hy, carpenter.  
McLachlin John, shoemaker.  
Miller Theodore, carpenter.  
Robins Alfred, cheese factory.  
Row Jas, general store.  
Wiltsie Hy, blacksmith.  
Whaley Lyman, postmaster.  
Wynett Wm, blacksmith.

**BALLYMOTE.**

A village in London Township, 6th concession, lot 8 ; 7 miles from London. Population 20.  
Jenning S & T, saw mill.  
Morrow T, shoemaker.  
Porter Chas, blacksmith.  
Ridge Geo, grocer.  
Ridge Wm, lumber.  
Templeton J & K, general store.  
Williamson Jno C, general store.

**BELMONT.**

A village on the townline of Westminster and Dorchester, township of Westminster. It contains a saw, grist and flax mill. It has an office of the Great Northwestern Telegraph Co'y. It is 7 miles from Dorchester, a station on the G. T. R., and 13 miles from London. Mail daily. Population 500.  
Abbott Wm jr, wagonmaker.  
Bond Thos, cabinetmaker.  
Boyd & McNichol, grist and saw mill.  
Bucannan Jas, blacksmith.  
Campbell Jas B, physician and surgeon.  
Campbell Jas, harnessmaker.  
Collie Wm, tailor.  
Creamer Robt, hotel.  
Cruthers John, shoemaker.  
Cruthers Mark, builder.  
Davidson Sam, cheese factory.  
Dyer Omel, money lender.

Dyer Wm, general store.  
Funger Ralph, blacksmith.  
Glance Hy, wagonmaker.  
Hull Sam, harnessmaker.  
Learn & Corson, Livery.  
Longfield & Sinclair, lumber.  
McDonald Rev.  
McKellar Arch, wagonmaker.  
McKellar Don & Son, general store.  
McMillan Don.  
McNichol John, miller.  
McPhail Jas, money lender.  
Manning Gabriel, carpenter.  
Marlatt Geo A, physician and surgeon.  
Mohr Wm, painter.  
Nugent W T, general store.  
Odell Wm H & Watcher, general store.  
Odell Wm Hy, drover.  
Omstead Geo, hotel.  
Pearson Rev T.  
Potts Jos, tinsmith.  
Robbins Rev Jno, Canada Methodist.  
Sinclair Dun, joiner.  
Skelding Chas, tinsmith.  
Spencer Dr. C B, physician.

**BELTON.**

A small village on the G. T. R., in the township of West Nissouri. Daily mail. Population about 50.  
John Morden, postmaster.  
Gibson John, general store.

**BIRR.**

A village in London Township, 10 miles from the city, on the Proof Line Road, 6 miles from Lucan, 4 miles from Iderton. Population about 50.  
Ferguson Hy, J. P.  
Gardiner Wm, steam thresher.  
Jackson Rev Wm, Methodist.  
Hodgins Wm H, postmaster.  
Lambourne —, wagonmaker.  
Lumsden Samuel, shoemaker.  
Morgan & Wood, agents agricultural implements.  
O'Neil Chas H, general store.  
O'Neil Ralph jr, hotel.  
Scott Thomas W, school teacher.  
Storey Geo, blacksmith and agent agricultural implements.  
Wilson Rev Robert, Church of England.

**BRINSLEY.**

A post village on the Sable River, in the township of McGillivray. Four miles from Ailsa Craig and 24 from London.  
Brown Geo, postmaster and gen'l store.  
Elwood Jas, blacksmith.  
Harland Wm J, shoemaker.

CHINGALESE IS NOT A DYE, BUT A DRESSING.

SUN LIFE ASSOCIATION CO. GRANTS LOANS ON POLICIES THAT ARE TWO YEARS OLD

Hodgins John, blacksmith.  
Richardson John, veterinary surgeon.  
Slack Ed T, grist mill.  
Seilie Robt, saw mill.

**BRYANSTON.**

A small village in the township of London. Distant from Granton, on the G. T. R., 7 miles, from London 12. Population about 100.

Bryanston Cheese Mfg Co.  
Carry Richard, poundkeeper.  
Cheney John, blacksmith.  
Dann Edward, general store.  
Dann Alex, general store.  
Goulding Jos, hotel.  
Goulding Thos B, gen'l store and miller.  
Grant J A, saw mill.  
Loveless Wm, shoemaker.  
Stevenson Jas M, physician.  
Wood & Cheney, saw mill.

**BYRON.**

An enterprising village on the river Thames, in the township of Westminster. Distance from Komoka on the G. T. R. 5 miles, 2½ miles from Hyde Park and 6 miles from London. Daily mail. Population 200.

Coombs Chas, J P.  
Dufton John, woollen factory.  
Fortener Jones, hotel.  
Griffin Wm, carding mill.  
Kenney F H, flour mill.  
Marshall Robt T, school teacher.  
Martin Hy, shoemaker.  
Saddler Robt, general store and post office.  
Sissons Samuel & Robt, handle factory.  
Wallace Marion, blacksmith.  
Wells J B, contractor.

**CASHMERE.**

A small village in the township of Mosa, 3 miles from Bothwell, on the G. T. R., 40 miles from London. Mail tri-weekly. Population about 26.  
Fisher Jas, grist mill.  
McNeil Hector, wagonmaker.  
Mansfield Geo, postmaster and general agent.  
Tunks W & R, saw mill.

**CLANDEBOYE.**

A station on the London Huron and Bruce Railway. The Great North-western Telegraph Company has an office. It is 20 miles from London. Population 200.  
Black Duncan, sectionmaster.  
Bunting —, photographer.

Carter James, agricultural implements.  
Coates Geo, carpenter.  
Coates Moses, mail carrier.  
Collins Asa C, harnessmaker.  
Deadman Wm, farrier.  
Easton Wm, grist mill.  
Ellwood Thos, carpenter.  
Flanagan John, general store and clerk division court.  
Frères Miss Sarah, millinery.  
Gilmour Wm, wagonmaker.  
Hargey J M, grocer.  
Hicks John, saddler.  
Hooper E S, general store.  
Hodgins Hiram, clerk Biddulph township.  
Hodgins Geo W, bailiff.  
Jones Francis, cabinetmaker.  
McIlhargy Jos, provisions.  
Morris J B, tailor.  
Porte Geo, hotel.  
Shoff D, postmaster and conveyancer.  
Slack E, grist mill.  
Stevenson Miss A, dressmaker.  
St John J, hotel.  
Sutton Dennis, saw mill.  
Sutton Jas, physician and surgeon.  
Windsor Wesley, blacksmith.

**COLDSTREAM.**

In Lobo township, 6 miles from Komoka and 15 miles from London. It has a telegraph office, operated by the Great Northwestern Telegraph Company. Mail tri-weekly. Population 100.

Adkin R, blacksmith.  
Barclay E R, general store.  
Clare Samuel, blacksmith.  
Cunningham Rev R M, Baptist.  
Macklin W E, physician.  
Marsh Jacob, general store and postmaster.  
McKay Alex, blacksmith.  
McKay Francis, shoemaker.  
McLean Jas, shoemaker.  
McNeil Jas, blacksmith.  
Treham John, grist mill.  
Webster Geo, hotel.  
Wood J T, conveyancer.  
Zavitz B P, jeweller.  
Zavitz Jas, general store.

**CORBETT.**

A village of growing importance in McGillivray township, 32 miles from London. Nearest station is Parkhill. Population about 80.  
Corbett John, saw mill and postmaster.  
Hawkin Jas, saw mill.  
McPherson Jas, wagonmaker.  
O'Sullivan Martin, general store.

**CRUMLIN.**

A small village in North Dorchester, 5 miles from London. Population about 200.  
Cass Noble, hotel.  
Dreany Henry, blacksmith.  
Dreany Robt, Postmaster, hotel and store.  
Young Peter, temperance house.  
Young Samuel, blacksmith.

**DELAWARE.**

A village on the River Thames, township of Delaware, with a money order postoffice. It has a telegraph office, operated through the Great North-western Telegraph Co. It is 18 miles from St Thomas, and 12 miles from London. Daily mail. Population 300.

Ackland John, grist mill.  
Bodkin Robt, postmaster and general store.  
Collins Richd, hotel.  
Elsie Robt, cooper.  
Erchenberger Saml, pottery.  
Fitzallen John, bailiff.  
Fox Chas J, clerk division court.  
Furry Jas, saw mill.  
Francis Abraham, physician and surgeon.  
Garnett Henry, saw mill.  
Holmes Rev John.  
Jarvis Francis C, hotel.  
Knowles John, artist.  
Lawson David, shoemaker.  
McLaren Dr Alex, physician and surgeon.  
Parfitt Albion, general store.  
Peacock Simeon, shoemaker.  
Portsmouth P, general store.  
Robertson Chas, shoemaker.  
Scott Miss, milliner.  
Sparkman Edward, carriage blacksmith.  
Swift George, Blacksmith.  
Tupholine Cordly, Brewer.

**DENFIELD.**

A post village in London Township, 6 miles from Ailsa Craig, on the G. T. R. 7 miles from Lucan, 14 miles from London, 1 from Brecon. Mail tri-weekly. Population about 150.  
Ateray Wm, saw mill.  
Burk W H, hotel.  
Edwards John, postmaster and lumber dealer.  
Hodgson Isaac, wagons and grist mill.  
Lumley A, blacksmith.  
Orr Robt, hotel.  
Rosser Jas, general store.  
Siddall Jos, saw mill.

**DERWENT.**

A village on the town line of Dorchester and Westminster, and in the township of Westminster. It is 7 miles from Dorchester Station, on the G. T. R., and 10 miles from London, with a daily mail and a population of about 100.

Allen G R, fruit dealer.  
Dibbs Mitchell, postmaster and general store.  
Jeffery Geo, carpenter.  
Kernohan Wm, drover.  
McCallum Hugh, blacksmith.  
Maning Emanuel, butcher.  
Maning G W, carriage painter.  
Walker David, carriage painter.

**DEVIZES.**

A small village on the town line of Nissouri and London, in the township of London, 7 miles from Granton, on the G. T. R., and 17 miles from London. Tri-weekly mail. Population 100.

Armstrong Wm L, blacksmith.  
Barnard Jabez jr, saw and flour mills.  
Bisbee Jas, cheese factory.  
Lumsden Jos, carriage maker.  
Murray Mat, general store.  
Riddle Robt, carpenter and builder.  
Ross Wm, postmaster and saw mill.  
Young Robt, shoemaker.

**DORCHESTER STATION.**

A village in the township of North Dorchester. It is a station on the G. T. R., 10 miles from London, with a daily mail. It has a telegraph office, operated by the Great North-western Telegraph Co. Population about 500.  
American Express Co, W T. Vanston agent.

Aylsworth Dan P, commissioner.  
Baker Jesse, shoemaker.  
Buccannan Mitchell T, hay fork manuf.  
Burdick Isaac N, general store.  
Caverley Wm, carpenter.  
Cartwright Wm T, J. P.  
Chittick Wm, hotel.  
Clegg Robt, baggagemaster.  
Fortin Rev, Episcopalian.  
Johnston Geo, carpenter.  
Johnston Alex, boots and shoes.  
Kerr Rev L, Methodist.  
Kippin Rev A H, Presbyterian.  
McCann Ezekiel, saw and carding mills.  
Moore Dr Saml W, physician, and surgeon.  
Miss Mrs Mary, general store.  
Mullin John, carpenter.

J. B. BELL & CO. MANUFACTURERS OF PIANOS & ORGANS  
 112 N. BROADWAY, N. Y. C.

Patterson Geo, mason.  
 Patterson John F, planing mill and lumber.  
 Payne Elijah, shoemaker.  
 Richardson Thos, hotel.  
 Richmond Wm, boots and shoes.  
 Scott Wm, postmaster.  
 Shaw R E & Sons, (Richd E, Wm H, Ed T & Richd), proprietors Dominion mattress factory.  
 Size Mr, grist mill.  
 Sweet Nathan, harnessmaker.  
 Tallack & Collins, (Mark Talleck, Wm Collins), blacksmiths and wagon-makers.  
 Vincent John, general store.  
 Willaie Lewis G, butcher and bailiff.  
 Wilson Wm, pumpmaker.

**DUNCRIEFF.**

In Lobo township, 8 miles from Ailsa Craig and 17 miles from London. Mail bi-weekly. Population about 75.  
 Barclay Arthur F, postmaster and gen'l store.  
 Charlton Bros, (Wm and Thos), grist mill.  
 Charlton Joseph, general store.  
 Oliver Thos, blacksmith.  
 Simons G M, drover.

**ELGINFIELD.**

On the townline of Biddulph and London, 3 miles from Lucan and 16 miles from London. Population about 50.  
 Benn Thompson, potash manufacturer.  
 Glass Matthew, postmaster and hotel.  
 Haskins Jas, blacksmith.  
 Keefe And, cheese factory.  
 McCombs Wm, veterinary surgeon.  
 McCormick — general store.  
 Mason David, painter.  
 Quigley Patrick J, general store and tanner.

**EVELYN.**

This village is in the township of Nisour West, 12 miles from London and 6 miles from Thorndale. Mail tri-weekly. Population about 150.  
 Bray Hy, postmaster and general store.  
 Burn John, J P and gardener.  
 Chealerapt Mark, cheese factory.  
 Henshaw Geo, blacksmith.  
 Hueston Wm, hotel.  
 Wilkinson Wm, general store.  
 Wright M N, market gardener.

**FALKIRK or CARLISLE.**

A prominent village in the township of East Williams, 4 miles from Ailsa

Craig, 22 miles from St. Marys and 21 miles from London. Mail daily. Population 200.

Garden Wm, general store.  
 Harbour Jas, boots and shoes.  
 Haskett Jas, hotel.  
 Humbel Geo W, wagonmaker.  
 Kelly John, harnessmaker.  
 Lambert & Sons, woolen mills.  
 Ross Jas, blacksmith.  
 Shipley G M, grist mill.  
 Stephenson Mrs Geo, tinware.  
 Westcott Wm Hy, saw mill.

**FERNHILL.**

In Lobo Township on the townline between Lobo and Williams townships, 20 miles from London, 8 miles from Strathroy and 9 miles from Ailsa Craig. Mail bi-weekly. Population about 50.

Anderson Wm A, carriage and wagon-maker.  
 Chapman John, saw mill.  
 McColl Don, blacksmith.  
 Owen David R, general store.  
 Owen Jenkin, postmaster.

**GLADSTONE.**

In North Dorchester, 6 miles from Dorchester on the G. T. R., and 16 miles from London. Mail bi-weekly. Population 200.

Abbott Wm, Blacksmith.  
 Brodie Alex, J P.  
 Jackson Hy, general store.  
 Lavene Trs, carpenter.  
 McCallum John, blacksmith.  
 McMurray Levi, postmaster and general store.  
 Scott Wm, carpenter.  
 Tooley Richard, cattle dealer.

**GLANWORTH.**

In the township of Westminster and a station on the London & Port Stanley Ry., 7 miles from St. Thomas and 8 miles from London. Mail daily. Population about 100.

Abbott Albert, blacksmith.  
 Coughlin John C, drover.  
 Coughlin John T, drover.  
 Doan Geo W, harnessmaker.  
 Drumgold John, hotel.  
 Fisher Vicars, J P.  
 Glen Jas A, lumber.  
 Jackson Minchin, J P.  
 Kindrel Josiah, general store.  
 Regan Dennis, constable.  
 Scott Andrew, carriagemaker.  
 Turnbull John, hotel and general store.

**GLENCOE.**

A flourishing post village in the township of Ekfrid and Mosa. Grain, lumber and produce are shipped from here. The Transcript is published weekly. The Great Northwestern Tel. Co'y has an office here. It is on the G. T. R. (Canada Air Line); 30 miles from London, 33 miles from Chatham and 78 miles from Windsor. Mail daily. Population about 700.

Adams Elisha, groceries and dry goods.  
 Adams & Ryckman, hardware, stoves and tin.  
 Aldred & Craig, cheese factory.  
 Barclay M F, drugs and books.  
 Bartlett Harmony, marble works.  
 Cameron Bros, flour mills.  
 Cameron Miss A D, Millinery.  
 Cameron Rev Hugh, Presbyterian.  
 Cameron & Lindsay, carriages.  
 Clanahan And, sash, door factory, &c.  
 Clanahan & Ferguson, hardware.  
 Cook W R, livery.  
 Corbett — boots and shoes.  
 Couse Geo, physician and surgeon.  
 Creighton E A, boots and shoes.  
 Davidson Frank, blacksmith.  
 Davidson Robt H, furniture.  
 Dixon H C, trunks, harness and valises.  
 Dobie & McMillan, grain merchants.  
 Evans T W, jeweler and watchmaker.  
 Fleming & Butler, general store.  
 Francis E K, photographer.  
 Frayer G J, postmaster, drugs and groceries.  
 Galbraith Neil, livery.  
 Giddens Wm, pumps.  
 Gordon Wm W, planing mill.  
 Graham Neil, hotel.  
 Griffith Eli, carding mill.  
 Harris Jas & Co, wagons and blacksmiths.  
 Harrison & Rathburn, bankers and grain merchants.  
 Howard & Bro, furniture.  
 Kennedy Angus A, harnessmaker.  
 Kepple Rev Stephen, Canada Methodist.  
 Leitch John A, cheese.  
 Leitch Malcolm, tailor.  
 Lumley W G, M. D., physician and surgeon.  
 McAlpine D L, physician and surgeon.  
 McAlpine Peter J, hotel.  
 McCreery & Younge, general store.  
 McIntyre Dun, physician and drugs.  
 McKellar Arch, groceries and shoes.  
 McKellar Randolph, hotel and livery.  
 McKenzie Angus, general store.  
 McKenzie Kenneth, saw mill.  
 McNeil John, merchant tailor.  
 McRae Don, hotel.

McRae Don B, blacksmiths and wagons.  
 McRae John, groceries.  
 McRae J R & Co., timber and staves.  
 Middlemiss & Hammond, grist mill and stove factory.  
 Oldrieve John, wagonmaker.  
 Ollis Wm, baker.  
 Parker Dan, marble works.  
 Payne W W, undertaker, &c.  
 Riddle A, painter.  
 Riggs Miss Eliza, millinery and fancy goods.  
 Ritchie Jas, shoemaker.  
 Rodgers Wm S & Son, tins, hardware, paints, oils.  
 Roone Jos E, boots, shoes and crockery.  
 Sara John, butcher.  
 Shoff Mrs J E, millinery and fancy goods.  
 Simpson Wm H, hotel.  
 Slater C B, conveyancer.  
 Steinhoff & Weston, Glencoe agri works.  
 Stitt John, potash manufacturer.  
 Sutherland Wm, editor and proprietor Transcript.  
 Swaisland W & Co, bankers.  
 Symes Wm, books and fancy goods.  
 Tait J M, dry goods and groceries.  
 Tait John, agent agri implements.  
 Thompson D D & Bros, sewing machines, &c.  
 Thompson & McRae, lumber.  
 Tron Matthew, butcher.  
 Vail Bros, general store and millinery.  
 Warner J R, groceries.

**GRANTON.**

A thriving village in the township of Biddulph. The Great Northwestern Telegraph Co. has an office here. It lies on the G. T. R., 12 miles from St. Marys and 18 miles from London. Mail daily. Population about 200.

Arnold F J, tinsmith.  
 Arnold W G, agent Mossey Mfg Co.  
 Blackwell Ben, general store.  
 Brooks E J, wagonmaker.  
 Cameron Hugh, blacksmith.  
 Crook Mrs C, grocery.  
 Culbert Thos, Central Hotel.  
 Foster Bros, butchers and bakers.  
 Foster Chas, broker.  
 Grant Jas, J P and postmaster.  
 Hobden W H, tailor.  
 Hodgins T C, saw mill.  
 Hodgins Sam, engineer.  
 Hudson John jr, undertaker and cabinet-maker.  
 Johnson John, shoemaker.  
 Laing Hugh, chemist and druggist.  
 Lester Wm, grain dealer.  
 Levitt John, switchman.

W. T. HEARD & GREENAWAY, ENGINEERS, 10 MASONIC TEMPLE, RICHMOND ST. LONDON.

Middleton Wm, hotel.  
Mitchell Alex, flour mill.  
Mobray Phil, J P.  
Murray John, general store.  
Park Jas, weaver.  
Payne Wm, engineer.  
Pidd Layton, county constable.  
Radcliffe J H, telegraph operator.  
Sadlier Jas, agent G. T. R.  
Stewart John, builder.  
Webb C M, general store.  
White David, boots and shoes.

### HARRIETSVILLE.

A small town in the township of North Dorchester. It has a large cheese factory; distant from Dorchester Stn. on the G. T. R. 7 miles, from London 17 miles. Mail daily. Population about 150.

Barr Cinnamon, postmaster, general store and commissioner.  
Canada Cheese Co.  
Dennis J W, cattle dealer.  
Fancey Robt, cheese factory.  
Groat Jas, butcher.  
Hawkins Frank, harnessmaker.  
Howey Robt, carpenter.  
Jackson Jas, hotel.  
Jelly John J, general store.  
Johnson Ruben, wagonmaker.  
Lewis Ed, blacksmith.  
McMillan John, J P and agent.  
Milgan Jos, carriagemaker.  
Morrison Hugh, boots and shoes.  
Pecunear Mackenzie, carpenter.  
Pickard Elias, carpenter.  
Thomas Richard, wagonmaker.

### HYDE PARK CORNER.

An important and growing village in London Township, 5 miles from London, 1 mile from Hyde Park Station and 6 miles from Komoka. The Great Northwestern Telegraph Co. has an office here. Mail daily. Population 200.

Brown Wm L, reporter.  
Fisher Jas, license commissioner.  
Forbes Jas, machine agent.  
Hanson Hy, M.D., physician and surgeon.  
Henderson Rev Alex, Presbyterian.  
Lampard Eliza, groceries.  
McArthur Mal, station master.  
McDonald Jno G, insurance agent.  
McKenzie D G, county clerk.  
McMillan Don, bank manager.  
McNannel Lucian, agent.  
Reeve Jno F, postmaster and general store.  
Landers Sam, blacksmith.  
Smith Dr J M, physician and surgeon.

ELLIOTT BROS., GROCERS AND WINE MERCHANTS, 155 DUNDAS STREET, LONDON.

Stilson Lather, carpenter.  
Vandervere David, blacksmith.  
Vandervere Lorenzo, wagon and carriage-maker.

### ILDERTON.

A growing village in the township of London, on the London Huron & Bruce Railway. The Great Northwestern Telegraph Company have an office. Distance from Lucan, on the G. T. R., 7 miles, 11 miles from Komoka and 10 from London. Population 200.

Armstrong Richd, blacksmith.  
Blackwell & Levitt, hotel.  
Clathworthy T J, sash and door factory.  
Dinsmore J T, general store.  
Ironsides Elisha, carriage and wagon-maker.  
McCaudless Frank, physician and surgeon.  
McMillan Dun, harnessmaker.  
McQueen Jas, postmaster and general store.  
Paisley R & Bros, saw mill.  
Paisley & Metcalf, sash and door factory.  
Patrick Wm, lumber.  
Richards Jas, wagonmaker.  
Routledge W & G, hotel.  
Stewart John, blacksmith.

### KERWOOD.

A village and station on the Sarnia Branch of the G. T. R., where all trains stop. Large quantities of lumber are shipped from here. There is a telegraph office here. It is 26 miles from London, 34 from Sarnia and 6 from Strathroy. Mail daily. Population 150.

Armstrong Wm & John, blacksmiths.  
Beeton Geo, constable.  
Currie N M, general store.  
Dowding Geo, saw and grist mill.  
Foster Chas, general store.  
Foster Saml, grain and general store.  
Gordon John, hotel.  
Jones Samuel, shoemaker.  
Jury John C, butcher.  
Kellett W B, general store.  
McKenny T, agent agricultural implements.  
Richardson Hy P, cheese factory.  
Richardson Jas, brickmaker and saw mill.  
Rowe Geo, shoemaker.  
Whiting John, blacksmith and wagon-maker.

### KEYSER.

A small village in Adelaide Township. It is 6 miles from Kerwood and 30 from London. Mail tri-weekly. Population 30.

Davids Nathaniel, carpenter.  
Glover Jas, proprietor Cheese Co.  
Hay Timothy, grazier.  
Hodgins Chas, school teacher.  
Keyser Jacob, brick and tile maker.  
Murray Patrick, grazier.  
Smith John, blacksmith.  
Stewart Jas, grazier.  
Thorp Ransom, cheese factory.

### KILMARTIN.

A small village in the township of Metcalf. Distant from Glencoe on the G. T. R. 4½ miles, and 37 miles from London. Mail bi-weekly. Population about 100.

Baxter Duncan, weaver.  
Livingston Donald, hotel.  
Livingston Duncan, saw mill.  
McIntyre Duncan B, postmaster.  
McIntyre Hugh B, blacksmith.  
McVicar Alex, shoemaker.  
Munroe Malcolm, drover.

### KOMOKA.

A village in Lobo Township and a station on the G. T. R. The Great Northwestern Telegraph Company have an office here. It is 10 miles from London. Mail daily. Population about 150.

Burr Rev Alex, Presbyterian.  
Crombie David, agent G. T. R.  
Cummings Geo, hotel.  
Dewar Archd, general store.  
Falls Thos, shoemaker.  
Fenner John, butcher.  
Finch Geo, tinsmith.  
Hord Robt, postmaster and general store.  
Lovice Rev Jas, Baptist.  
McMillan Rev, Dun, Presbyterian.  
Martinson Wm, gardener.  
Matheson Jas, carpenter.  
Matheson Miss Bella, dressmaker.  
Oliver Geo, tanner and shoemaker.  
Ortt Wm, telegraph operator.  
Shipley John, hotel.  
Sinclair John, blacksmith.  
Smith Alex, cooper.  
Smith Archd, blacksmith.  
Smith Robt R, physician and surgeon.  
Spence Smith, blacksmith.

### LAMBETH.

A small village on the macadamized road between London and Delaware, town-

ship of Westminster. The Great Northwestern Telegraph Company has an office here. It is 6 miles from London, with a population of about 250.

Anderson Hy, blacksmith.  
Arthur Wm, flour and saw mill.  
Clark Geo, painter.  
Crews Rev, Thomas, Canada Methodist.  
Davis Rev J L, Episcopal Methodist.  
Elson John, carpenter.  
Elson Joshua, carpenter.  
Folland Jas, shoemaker.  
Foster Jas, hotel.  
Hall Thos, bricklayer.  
Heard Geo, wagonmaker.  
Manstone Jno G, carpenter.  
Mann David, blacksmith.  
Mann Henry, painter.  
Milner Mrs Wm, grocery.  
Revell John, shoemaker.  
Reynolds Jas S, hotel.  
Routledge Geo, M D, physician and surgeon.  
Sanagan Lewis, cooper.  
Sanagan Wm, tailor.  
Stinchcomb Walter, blacksmith.  
Vandermach L M, general store.  
Yelling Rev C, Bible Christian.

### LOBO.

A small village at the intersection of the London and Sarnia and Williams gravel road, township of Lobo. The Great Northwestern Telegraph Company has an office here. It is 11 miles from London and 5 miles from Komoka station on the G. T. R. Mail tri-weekly. Population about 200.

Barclay E R, general store.  
Edwards Thos S, postmaster and general store.  
Colclough F E, shoemaker.  
Edwards Miss Annie, telegraph operator.  
Edwards Miss Lottie, telegraph operator.  
Graham Donald, blacksmith.  
Graham Dr Peter L, physician and surgeon.  
Irwin John, carpenter.  
McVicar John, carpenter.  
McArthur A A, swine breeder.  
McArthur D C, tile maker.  
McCallum R K, wagonmaker.  
McIntyre Hugh, speculator.  
McLaughlin Miss B, milliner.  
Monger W F, hotel.  
Morden Chas, harnessmaker.  
Murch Geo, blacksmith.  
Powell T R, wagonmaker.  
Powell Thos, plasterer.  
Whiting Geo, shoemaker.  
Wilson Geo, blacksmith.  
Woolway Mrs, hotel.

SUN LIFE ASSOCIATION CO. ITS UNCONDITIONAL POLICIES HAVE NO RESTRICTION ON RESIDENCE OR OCCUPATION.

**LIEURY.**

A village near the centre of the township of McGillivray. It is 28 miles from London and 6½ miles from Parkhill. Mail daily. Population about 75.

Baxter Jas, bridge builder.  
Erskin And, township treasurer.  
McEachran Rev Duncan, Presbyterian.  
McKenzie Dun, blacksmith.  
McVicar John, assessor.  
Paterson R H, framer.  
Ross Jas, shoemaker.  
Smith Alexander, postmaster and general store.  
Waistell Richd, veterinary surgeon.

**LONGWOOD STATION.**

A village in Caradoc Township. There is a telegraph office here. Population about 250.

Beaumont Robt, blacksmith.  
Cady Isaac M, builder.  
Campbell Neil, blacksmith.  
Cole Edward G, tailor.  
Ferguson Jacob, carriage and wagon-maker.  
Fletcher Robt, tinsmith.  
Fraser Rev Alex, Presbyterian.  
Gowman Thos G, carpenter.  
Harris Jas, shoemaker.  
Harvey Hy, harnessmaker.  
Harvey Wm, proprietor Temperance hotel.  
Johnson Arthur M, cabinetmaker and undertaker.  
Johnson Geo, cabinetmaker.  
Kellaster Geo, general store.  
Kent Geo, flour and grist mill.  
Langtree Thos, butcher.  
McCallum Hugh, shoemaker.  
McRae Don, grain dealer.  
Mulligan Miss, millinery.  
Nichols D, hotel.  
Northcott Jas E, blacksmith and wagon-maker.  
Pratt John, shoemaker.  
Ratray John, blacksmith.  
Rawlings Geo W, general store.  
Robinson Geo, hotel.  
Sinclair Dan A, physician and surgeon.  
Torrance Jas W, stock and grain dealer.  
Trayte Geo W, baker.  
Trayte Thos, baker and confectioner.  
Vail Geo W, general store.  
Wellman Wm, lumber dealer, builder, and express agent.

**LUCAN.**

A flourishing village on the G. T. R. in the township of Biddulph. It contains

4 churches, 2 foundries, 2 flouring mills, a flax mill, 4 hotels and a branch bank. The Enterprise, a weekly newspaper, is published. The Great Northwestern Telegraph Co. has an office here. It is 18 miles from London, 13 miles from St. Marys, 12 miles from Exeter and 25 miles from Stratford. Daily mail. Population 1,200.

Abbott N B & J B, props and printers of the Enterprise.  
Alexander John, fish dealer.  
Anderson Peter, tonsorial artist.  
Armitage Jas, marble works.  
Armitage J R, general store.  
Ball F W, manager Canadian Bank of Commerce.  
Briegal W, G T R station agent.  
Cain Jno F, prop Royal Hotel.  
Cathcart Geo, boots and shoes.  
Cann F, books and stationery.  
Collins Hy, tin and hardware.  
Connoly Rev Jno R, Roman Catholic.  
Dagg Jno H, baker.  
Diamond Mrs W, grocer.  
Donovan W, Vulcan Foundry and agricultural implements.  
Drought Wm, cabinetmaker.  
Elwood Wm, merchant tailor.  
Farrell J, chemist and druggist.  
Flock Dr C W, physician and surgeon.  
Fox John, produce dealer.  
Fox Leonard, general store.  
Fox Robert, broker.  
Gibson Sylvester, plaining mill.  
Glendinning Rev A, Presbyterian.  
Goodacre Albert, cabinetmaker.  
Grundy Wm, pianos and organs.  
Guest Wm, groceries and provisions.  
Guilfoyl J, harnessmaker.  
Haskett R, grocer.  
Hodgins Isaac, hotel.  
Hodgins Thos, shoes and groceries.  
Hodgins Jas B, butcher.  
Hodgins Thos, general store.  
Hogg Wm, flax mill.  
Hooper Wm, flouring mill.  
Hossack Dr Thos, physician and surgeon.  
Hutchins W & W H, produce dealers.  
Jackson Jno, foundry.  
Jackson Rev Geo, Canada Methodist.  
Judge John, carriagemaker.  
Lamb A M, general store.  
Langford E A, saw mill.  
Lee Miss Mary J, milliner.  
Low Jos, furniture.  
Lynham Francis, general store.  
MacDiarmid W, barrister.  
McCosh Bros, general store.  
McFalls A, Queen's Hotel.  
McGuire John, carriagemaker.

McLean Robt, livery and hotel.  
McLean Wm J, foundry.  
McRoberts Chas, cattle dealer.  
Mara Ed, general store.  
Matheson Wm, watchmaker and jeweler.  
Monroe Bros, wine merchants.  
Murdy John, undertaker.  
Neville Jno, blacksmith.  
Oneil R H, broker.  
Porte Wm, postmaster and telegraph office.  
Pratt Wm, pop manufacturer.  
Rollins Wm, groceries, boots and shoes.  
Shaw John, lumber.  
Smyth M G, confectioner.  
Stanley B, general store and hardware.  
Stanley, Dight & Co., flour mill.  
Sutton Jas, M D, physician and surgeon.  
Stetean G L, photographer.  
Tennent E, veterinary surgeon.  
Walker Wm, grocer.  
Wilson Jas, baker.

**MIDDLEMISS.**

A village in Ekfrid Township near River Thames. The Great Northwestern Telegraph Co. has an office here. It is 17 miles from St. Thomas. Population about 200.

Campbell Robt, postmaster and general store.  
Clark John, general store.  
Ingham Hy, boots and shoes.  
Irish Finlay, brickmaker.  
Mark Jas, grocer.  
Middlemiss Mrs Geo, saw and grist mill.  
Simmons Geo, bl'ksmith and wagonmkr.  
Watson Geo, wagonmaker.

**MOORESVILLE.**

A small village on the gravel road between London and Exeter, in the township of Biddulph. It is 22 miles from London and 5 miles from Lacan. Daily mail. Population 80.

Clark Wm J, postmaster and general store.  
Hodgins Adam H, blacksmith.  
Hodgins M W, hotel.  
Hymers John, wagonmaker.  
McNamee And, boots and shoes.  
McNamee Robt, shoemaker,  
Simpson Richd, blacksmith.

**MORAY.**

A village on the Parkhill road, township of McGillivray, 32 miles from London and 3 miles from Parkhill, on the G. T. R. Mail daily. Population about 100.

Hawker Jas, saw mill.

Jennings Thos, lumber.  
Long Geo E, general store.  
Poulter David, postmaster, blacksmith and general store.  
Snell Thos, hotel.

**MOSSLEY.**

In North Dorchester, on the Elgin gravel road. It is 5 miles from Dorchester Station on the G. T. R. and 15 miles from London. Mail tri-weekly. Population 100.  
Amoss John, saw mill.  
Lane Reuben, postmaster and general store.  
Moakes — blacksmith.  
Moakes John, blacksmith.  
Moakes Mrs, general store.  
Moir Jas, shoemaker.  
Plaxton James, school teacher.  
Pittapiece John R, grocer.

**MT. BRYDGES.**

A village in the Township of Caradoc, and a station on the G. T. R. Staves and timber are shipped from here in large quantities. The Great Northwestern Telegraph Company has an office here. It is 15 miles from London. Daily mail. Population 350.

Arnold John, saw mill.  
Betts John, hotel.  
Bodman Dan J, hotel.  
Bolton A T, undertaker.  
Bond Geo, carpenter.  
Clark John, boots and shoes.  
Clark Jos, grist mill.  
Cullings & Shultz, carriagemakers.  
Edwards S D, insurance agent.  
Gamble Jas, stove factory.  
Gillam Hiram, blacksmith.  
Graves John, blacksmith.  
Handy Mrs E, general store.  
Holmes Rev Ed, Canada Methodist.  
Lee E, builder.  
Loudon F F, builder.  
McAvoy And, town clerk.  
Mee F W & Co, druggists.  
Mihell Mrs, millinery, etc.  
Northcott Thos, J P.  
Parrott G B, nursery.  
Pearse & Co, general store.  
Pearse Thos, postmaster.  
Robinson Jos, school teacher.  
Robertson W C, tailor and grocer.  
Snellgrove W Y, blacksmith.  
Stephenson Robt, harnessmaker.  
Sutherland Jas, builder.  
Stodart Thos, grocer.  
Tuck E, general store.  
Tuphline R A, grist mill.  
Wotton Richd, tinsmith.

**MUNCEY.**

A village on the Muncey road, in Caradoc Township, 18 miles from London, 15 miles from Strathroy and 7 miles from Mt. Brydges; a station on the G. T. R. Mail daily. Population about 100.

Chase Rev H P, missionary.  
Edwards Rev A, missionary.  
Fisher Jos, teacher.  
Furey Jas, saw mill.  
Hannon Hy, blacksmith.  
Logan Scobie, teacher.  
McGregor Alex, postmaster.  
McGregor Bros, general store.  
McIntyre Malcolm, license inspector.  
Nicholas John, teacher.  
Schuyler J F, teacher.  
Sickles Elijah, teacher.  
Stewart Chas, teacher.  
Shepherd Rev W W, principle Mount Elgin Institute.

**NAIRN.**

A village at the terminus of the Lobo and Williams gravel road, Township of East Williams, 22 miles from London and 3 miles from Ailsa Craig on the G. T. R. Mail tri-weekly. Population about 200.

Bailey John, weaver.  
Barr Duncan, blacksmith.  
Bethune Don, general store.  
Carmichael Allan, hotel.  
Foster Valorious, carpenter.  
Marsh Hammond, file maker.  
Parsons John, carding, saw and flour mills.  
Stemmer Chas, miller.  
Tattersall Stanley, veterinary surgeon.

**NAPIER.**

A thriving village on the Sydenham river, Township of Metcalf. It has 2 churches, 1 saw mill, a grist mill and a woolen mill. It is 36 miles from London and 6 miles from Kerwood; a station on the G. T. R. Daily mail. Population 250.

Arthur Alex, conveyancer.  
Arthurs John, postmaster.  
Bowlby Alex, cabinetmaker.  
Brunnell John, pumpmaker.  
Cady John, hotel.  
Calvert W S, general store.  
Case Ira, blacksmith.  
Dunlop & Richardson, saw mill.  
Gotschald Herman, weaver.  
Hutton John, general store.  
Hutton Mrs Mary A, grocer.  
Knapton Chas, shoemaker.

**B**XETER MANDRAKE BITTERS FOR THE LIVER.

Livingston Don, hotel.  
Lowe Hy, harnessmaker.  
Mackay Thos, brickmaker.  
Nixon Dr A, physician and surgeon.  
Orchard Jas, blacksmith.  
Rundell P, tailor.  
Sheriff Archd, blacksmith.  
Sutherland Mrs C, mills, etc.

**NEWBURY.**

A flourishing village in Mosa Township and a station on the G. T. R. It has 5 churches, 3 hotels and a woolen factory. The Great Northwestern Tel. Co. has an office here. It is 27 miles from Chatham and 36 miles from London. Mail daily. Population about 800.

Adair Robt, boots and shoes.  
Anderson Robt, general store.  
Andrews Thos, tins and stoves.  
Archer John J, insurance agent.  
Bayne & Douglas, general store.  
Brown Mrs, milliner.  
Bryden Robt, druggist.  
Burr John, blacksmith.  
Clayton Wm, gunsmith.  
Clements Wm, veneer factory.  
Clun Edwin, boots and shoes.  
Coombs Henry, flour mill.  
Douglas Jas, saddler.  
Gay John, blacksmith.  
Graham Dr Alex, physician and surgeon.  
Graydon Alex, hotel.  
Guppy Wm J, general store.  
Guy Benj, groceries and provisions.  
Holman Jacob, hotel.  
Kelly Jos B, dry goods and groceries.  
Laird P H, groceries and fancy goods.  
Martin R A, hotel.  
McDonald R, tailor.  
McLean Jas, lumber.  
Miller Jacob, watchmaker.  
Mitchell A D, groceries and hardware.  
Palmer Wm, veterinary surgeon.  
Purdy Mrs D A, sewing machines.  
Robinson John, wagonmaker.  
Robinson Thos, general store and postmaster.  
Room Dr W F, physician and surgeon.  
Schawader Wm, butcher.  
Stokes W & Son, lumber and staves.

**NILESTOWN.**

A small village in the township of North Dorchester. It has a telegraph office, operated by the Great Northwestern Tel. Co. It is 3 miles from Dorchester on the G. T. R. and 7 miles from London. Mail daily. Population about 250.

Barnard Luther, boots and shoes.

Barrows Jos C, telegraph operator.  
Craig Wm, carriage and wagonmaker.  
Giles Fred, blacksmith.  
James Jas A, cheese factory.  
McCandless John, hotel.  
McCarty Geo, hotel and general store.  
Odell Fred, blacksmith.  
Reynolds Hy, postmaster and general store.  
Richmond Richd, boots and shoes.  
Williams Hy, carriage and wagonmaker.  
Wilson Jos, blacksmith.

**PARKHILL.**

A market town in the township of West Williams. Grain, timber and lumber are shipped from here. The Great Northwestern Telegraph Co. has an office at this place, and is situated on the G. T. R. It supports a weekly newspaper, the Parkhill Gazette, and has an agency of the Exchange Bank of Commerce. It is 31 miles from London and 40 miles from Sarnia. Mail daily. Population about 1,800.

Adams John, stoves and hardware.  
Allen Hy, money lender.  
Baird Wm, pumpmaker.  
Barclay Geo E, physician and surgeon.  
Bayton Wm, boots and shoes.  
Benhan Hy, jeweler.  
Boyce Wm, general store.  
Burns Miss Jeanette, millinery.  
Burns Alex, conveyancer.  
Campbell Dan, bricklayer.  
Cameron A, baker.  
Caw Wm, physician and surgeon.  
Chamberlain E G, general store.  
Dickenson Wm, insurance agent.  
Digman Thos, tavern.  
Donley Jas, hotel.  
Dalton J J, wines and liquors.  
Elliott Miss Tina, hair goods.  
Elliott Miss Catherine, dressmaker.  
English John, tins.  
Fletcher Wm, baker.  
Forbes David, tailor.  
Fussell Francis, blacksmith.  
Gibbs J M, dry goods and groceries.  
Graham Wallace, proprietor and printer Gazette.  
Griffith John, woolens.  
Grundy Thos, stationer, &c.  
Hall & Hodgins, hotel.  
Hall Jonathan, harnessmaker.  
Harrison John, stove factory.  
Hanson & Dickson, hardware.  
Hawkey John, carriages and grist mill.  
Hayes Geo, cooper.  
Houston J, tailor and clothier.  
Jarvis J, grain.  
Jennings Thos, lumber.

Johnson Rev W, Church of England.  
Keeler Ed, grocer.  
Kinniston J & Co, bakers and grocers.  
Knapton Jas, blacksmith.  
Laycock Rev J, Episcopal Methodist.  
Lindsay & White, general store.  
MacAlpine Dr R S, physician.  
Magladery Thos, agricultural implements.  
Manes Ed, blacksmith.  
Marrin Bros, musical instruments.  
Mason J G, agt agricultural implements.  
Matheson & Ross, grocers.  
Mayburry T A, insurance agent.  
McAdam And, cheese factory.  
McAuliffe J C, boots and shoes.  
McCallum J, clothier.  
McEachran Rev D, Presbyterian.  
McDonald A A, lumber.  
McDonald R & J, blacksmiths and wagon-makers.  
McGinniss Dougald, blacksmith.  
McKenzie Brown, dry goods.  
McKenzie Donald, boots and shoes.  
McKinnon Neil, boots and shoes.  
McLeod David & Co, general store.  
McNeil & McMillan, general store.  
McTaggart Alex & Co, bankers.  
Millyard Rev Reub, Canada Methodist.  
Mulvaney Terrence, wines and spirits.  
Munroe Bros, general store.  
Niblock Jas, marble works.  
Noble John, postmaster.  
Patrick W R, gunsmith.  
Phippen E J, photographer.  
Phippen Nicholas, cabinetware.  
Porte Robt, general store.  
Ross Jas, grocer and shoes.  
Ross Miss Maggie, dressmaker.  
Scoon John, druggist.  
Skinner Misses P H & E B, dressmakers.  
Shoults John & Wm, flour mill.  
Simpson Wm, hotel.  
Smith J C, agricultural implements.  
Soady J E, boots and shoes.  
Stevenson E J, druggist.  
Thompson Wm M, stationmaster.  
Tudor Sanford, prop Tudor House.  
Vanwick Adam K, planing mill.  
Watson Thos, saddler.  
Weir Alex, book store.  
Willard John jr, painter.  
Willard Ennice, dressmaker.  
Wilson A, boots and shoes.

**POPLAR HILL.**

A small village in the township of Lobo, 1 mile from Coldstream.

Barclay E R, genl store and postmaster.  
Lambert Elijah, harnessmaker.  
Macklin Dr W E, physician.  
McKay Alex, blacksmith.  
McLean Jas, shoemaker.

**S**UN LIFE ASSOCIATION CO. SECURITY, LOW RATES AND PROMPT SETTLEMENTS.



McNeil Jas, blacksmith.  
Schooley Edwin, carriagemaker.  
Webster Geo, hotel.  
Zavitz B P, watchmaker.

**STRATHROY.**

An incorporated town on the river Sydenham, in the townships of Adelaide and Caradoc. It was incorporated in 1870. It is an important station on the Sarnia branch of the G. T. R. There are churches of six denominations and several weekly newspapers. It has branch banks, a number of factories, woolen mills, knitting factory, cigar factory, flour mills, foundries and potteries. The Great Northwestern Telegraph Company has an office here. It is 20 miles from London and 40 miles from Sarnia. Population about 4,000.

Akroyd J F, musical instruments.  
Alexander Jos, hotel.  
Alexander Jas, grocer.  
Auld Mrs E W, milliner.  
Avery W, butcher.  
Ayre Joshua, grocer.  
Bailey Thos, agent and blacksmith.  
Banghart John, hotel.  
Barber Mrs, hatter and furrier.  
Barnes Jas, pumpmaker.  
Barnes John, livery.  
Bettridge Wm, physician and surgeon.  
Billington Geo, physician and surgeon.  
Bishop Jos, hotel.  
Bishop Wm, hotel.  
Bixel M & Son, brewers.  
Bowley Jas, builder.  
Bowley Jas D, builder.  
Bradley Mrs M, fancy goods.  
Brown Donald, pottery.  
Cain Wm, grocer.  
Cameron & Son, boots and shoes.  
Campbell D, grocer.  
Campbell D A, brickmaker.  
Canadian Poultry Review, (see James Fullarton.)  
Canadian Bank of Commerce.  
Carruthers A, grocer.  
Chalmers Jas, stoves and tins.  
Cleverdon L, cheese and produce.  
Coulter Charles, dentist.  
Cox James, butcher.  
Craik Alex, carriages and wagons.  
Crealey Trusnan, photographer.  
Cumming Wm, saddler and harnessm'kr.  
Davidson R, blacksmith.  
Dickinson R, books and stationery.  
Diggins J C, jeweler.  
Dingman A, editor and printer.  
Diprose R, grocer.  
Dumbril R & Co, hardware.

Dyas W J, drugs.  
English J & J H, saw mill.  
Evans Bros, publishers.  
Fawcett Wm F, sash and door factory.  
Ferguson D, millinery.  
Filmore Wm, tavern.  
Fitzpatrick P, livery.  
Foe Amos, pumpmaker.  
Francis Geo M, confectioner.  
Frank F W, insurance agent.  
Fullarton Jas, publisher and printer.  
Geddes Bros, dry goods.  
German G G, insurance agent.  
Goodwin Abraham, groceries and liquors.  
Gott Wm, cabinetware, etc.  
Graham D, flour and feed.  
Grant W H, dry goods.  
Grist Chas, hardware.  
Hambly & Fletcher, marble works.  
Hambly J H, eggs and produce.  
Harrison Fred L, undertaker.  
Harrison Thos F, furniture.  
Heard John & Co, cement, patterns, etc.  
Henderson Rev C, Canada Methodist.  
Henderson G, physician.  
Hoare Walter, physician.  
Hoskins & Co, tins.  
Humphries S & Son, wagons & carriages.  
Irvine Thos, grocer.  
Iverson J A, land agent.  
Iverson Rev Jas A, Canada Methodist.  
Irwin John, insurance agent, etc.  
Johnson Alex, banker.  
Johnston John, blacksmith.  
Johnston W J, grocer.  
Ketchum H E, rake and handle factory.  
Kittridge A H, capitalist.  
Laulor J E, carriages.  
Lemon Geo, cattle dealer.  
Lighthouse L W, builder.  
Loynes, McLellan & Co, planing mill.  
Macrault & Parker, dry goods.  
Maitland Edwin, auctioneer, etc.  
Mann Geo A, boots and shoes.  
Mansfield Geo & Co, grain merchants.  
Manson Jas, broker.  
McBride John, carriages and wagons.  
McBride Wm, grist mill.  
McColl Hugh, postmaster.  
McEwan Geo, grocer.  
McGarvey John, carriagemaker.  
McGibbon Finlay, lumber merchant.  
McLaren And, dentist.  
McMillan J, grocer.  
McNeil David, sewing machines.  
McVern & Dawson, tailors.  
McVicar D, confectioner.  
Meek F W, druggist.  
Meekinson & Son, grocers.  
Mills Mrs, fancy goods.  
Milner Wm, wagon lumber.  
Mitchell John, cooper.

Moore Isaac tavern.  
Morrison Peter, tailor.  
Murray W H, dry goods.  
Napper Chas, baker and confectioner.  
Nicholls T, grocer.  
Nicolson Robt, lumber.  
Noble Jas, auctioneer. 3  
Nugent Ed, physician.  
O'Dwyer P, grocer.  
Ogden John, harnessmaker.  
O'Keefe Patrick, grocer.  
O'Neil J H, cattle dealer.  
Orchard Geo, money lender.  
Paine J & B, boots and shoes.  
Parker C W, groceries and fruit.  
Parsons E T, butcher.  
Pike Chas, tailor.  
Rapley Wm & Co, gent's furnishings, etc.  
Ray S H, photographer.  
Richardson L R, cheese merchant.  
Richardson Robt, chair manufacturer.  
Robertson John, tins and stoves.  
Robinson R A, carding mill.  
Rothwell C A, fancy goods.  
Rowland E & Co, brokers.  
Scott C G, dry goods.  
Smith C W, cooper.  
Smith Louis, money lender.  
Snell Thos, brewer.  
Springer M, drugs, etc.  
St John's church, Episcopal, Rev A C Hill, rector.  
Slatham & Son, gunsmiths.  
Stevenson Alex, harnessmaker.  
Stevenson Robt, physician and surgeon.  
Strathroy Knitting Co.  
Strathroy Milling Co.  
Sutherland R, tailor.  
Swift J & Co, dry goods, etc.  
Tomlinson Bros, painters.  
Trotter Rev J E, Baptist.  
Vanstaden W G & Co, hub factory.  
Vary Day W, foundry.  
Venner Mrs J, fancy goods.  
Vrooman Dav, agricultural implements.  
Western Dispatch (see A Dingman).  
White Edwin A, grocer.  
Wilson Francis, cheese, etc.  
Williston Rev J K, Canada Methodist.  
Wood & Black, wagons.  
Woodberry Mrs M B, hotel.  
Woodward F F, butcher.  
Worthington A J, barber and cigars.  
Wright Jas, boots and shoes and tanner.  
Yokes S M & Co, tailors.  
Zavitz D H, sodawater works.  
Zavitz Edwin, money lender.  
Zavitz Thos, money lender.

**THORNDALE.**

A post village in the township of West Nissouri, on the G. T. R. It has 3

churches, a saw mill, a grist mill, and 2 hotels. The Great Northwestern Telegraph Co. has an office here. It is 10 miles from St. Marys and 10 miles from London. Mail daily. Population about 250.

Armstrong J J, G T R agent.  
Bailey Hamilton, grocer.  
Carter Jos, painter.  
Dickson H, harnessmaker.  
Dunn Ed, carriagemaker.  
Fitzgerald Ed, lumber.  
Ford Rev James E, Canada Methodist.  
Garner Robt, general store.  
Garner Chas, hotel.  
Gifford Alfred, harnessmaker.  
Grant Alex, builder.  
Griffith Aaron, stave and cheese box factory.  
Harkman Jos, general store.  
Harrison & Dunlop, grist and saw mills.  
Harrison Thos, postmaster and general store.  
Harrison Wm, builder.  
Hughen Wm, blacksmith.  
McKechnie Dr N, physician and surgeon.  
McLean Alex, hotel.  
Murray Dr S S, physician and surgeon.  
Near & Nicholson, blacksmiths.  
Ryckman Ed, tinsmith.  
Ryckman S H, grocer.  
Salmon & Nicholson, blacksmiths.

**WARDSVILLE.**

An incorporated village on the river Thames, township of Mosa. It has 4 churches, a foundry, a woolen mill, 2 flouring mills, 1 saw mill and 3 hotels. The Great Northwestern Telegraph Co. has an office here. It is 3 miles from Newbury, 7 miles from Bothwell, 25 miles from Strathroy and 36 miles from London. Mail daily. Population 650.

Aitchison Ebenezer, saw mill.  
Anthis Martin, butcher.  
Dole D W, fancy goods.  
Cornell Adam, blacksmith and wagon-maker.  
Coyne & Wilson, dentists.  
Cuthbert Alex, shoemaker.  
Dufton E T, postmaster and gen'l store.  
Dykes Jas M, printer.  
English Thos, wagonmaker.  
Fawcett, Livingstone & Co, bankers.  
Folger Hy, hotel.  
Gillies Zachariah, general store.  
Hail & Sparling, builders.  
Harolp Thos, boots and shoes.  
Heath John, flour mill.  
Henderson H & Sons, foundry.  
Jackson Jas, cooper.  
Jell Horatio, general store.

PIANOS & ORGANS  
 L. L. B. & SONS  
 100 St. George St. London

Kay Wm, editor, prop and printer of the Wardsville Post.  
Kirby & Purcell, general store.  
Lilley Ed, carriage-maker.  
Macintosh Geo, hotel.  
McChesney W C, hotel.  
McCowan Alex, flour and feed.  
McIntyre Alex, tailor.  
McLean Jas, lumber.  
McRae & Fitzpatrick, grist mill.  
Minna Geo, tailor.  
Minna & Harper, marble works.  
Moore David, stoves and hardware.  
Morrison Robt, builder.  
Mulligan Thos, blacksmith.  
Munro A A, butcher.  
Munro M G, general store.  
Newson Wm, harness-maker.  
Palmer J W, veterinary surgeon.  
Pripes & Helmes, livery.  
Potts H, tinsmith.  
Reilley F B & Son, builders.  
Rutherford Isabella, millinery.  
Sheppard Wm, saddler.  
Smith Jas, painter.  
Upper Jacob S, hotel.  
Ward John, planing mill.  
Ward Mrs John, millinery.  
Wileox Geo, baker.  
Wilson And, blacksmith.  
Whiting Rev Jas, Canada Methodist.

#### WENDIGO.

A village on the St. Clair branch of the Canada Southern Railway. The Great Northwestern Tel. Co. has an office here. It is 2½ miles from Longwood Station. Population about 250.

ELLIOTT BROS., GROCERS AND WINE MERCHANTS, 155 DUNDAS STREET, LONDON.

Begg Jas G, postmaster and gen'l store.  
Cady Isaac M, builder.  
Cale Ed G, tailor.  
Ferguson Jacob, carriage and wagon-maker.  
Fletcher Robt, tinsmith.  
Fraser Rev Alex, Presbyterian.  
Gournan Thos G, carpenter.  
Harris Jas, shoemaker.  
Harvey Henry, harness-maker.  
Johnson A M, undertaker.  
Kent Geo, flour and grist mill.  
Langtree Thos, butcher.  
McCullum Hugh, shoemaker.  
McRae Donald, grain dealer.  
Mulligan Miss, millinery.  
Robinson Geo, hotel.  
Sinclair Dr D A, physician and surgeon.  
Sponenburgh G W, carriage-maker.  
Trayte Geo W, baker.  
Vail Geo F, general store.  
Wellman Wm, express agent.

#### WEST MCGILLIVRAY.

In the township of McGillivray, 5 miles from Ailsa Craig, on the G. T. R. Mail bi-weekly. Population about 45.

Craig David C, hotel.  
Fraser Wm, postmaster and general store.  
McKann H, shoemaker.  
Patterson John, wagon-maker.  
Robinson And, bricklayer.  
Smith John, brickmaker.  
Spearman C, pump-maker.  
Weir Wm, blacksmith.

*James J. J.*  
**C. N. NELLES,**



**LIVERY,**

**HACK & BOARDING STABLES**

288 DUNDAS ST., NEAR WELLINGTON,  
**LONDON, - - ONTARIO.**  
TELEPHONE IN CONNECTION.

**PRIZE MEDAL SEEDS.**

**GEO. McBROOM**  
SEED MERCHANT AND IMPORTER,



Has been awarded the lion's share of awards for the excellence of his displays of Seeds, Bulbs, Everlasting Flowers, etc. The Bronze Medal and Diploma at the Great International Australian Exhibition, of 1877, for excellence of seeds. Special awards Western Fair, London, 1877, 1879, 1880. No other awards given. Highly commended and recommendation for Diploma, Western Fair, 1882. Diploma for best display, Southern Counties' Fair, St. Thomas, 1882, and Diploma at the Guelph Central Fair, 1882.

Handsomely Illustrated Seed Catalogue, containing a list of about one thousand varieties of Flower, Vegetable and Field Seeds, and a vast amount of useful information to the beginner, free to all who apply.

**GEO. McBROOM, London, Ont.**



FOR OLD and YOUNG, MALE and FEMALE.

Positively cures Nervousness in all its stages ; Weak Memory, Loss of Brain Power, Sexual Prostration, Night Sweats, Spermatorrhœa, Leucorrhœa, Barrenness, Seminal Weakness, and General Loss of Power.

It repairs Nervous Waste, Rejuvenates the Jaded Intellect, Strengthens the Enfeebled Brain, and Restores Surprising Tone and Vigor to the Exhausted Generative Organs in either sex.

With each order for Twelve Packages, accompanied with Five Dollars, we will send our written guarantee to refund the money if the treatment does not effect a cure.

IT IS THE CHEAPEST AND BEST MEDICINE IN THE MARKET.

Pamphlet sent free by mail to any address.

## MACK'S MAGNETIC MEDICINE

Is sold by Druggists at 50 cts. per box, or 6 boxes for \$2.50, or will be mailed free of postage, on receipt of money, by addressing Mack's Magnetic Medicine Co., Windsor, Ont., Canada.

Sold by all Druggists. Guarantees issued by C. McCallum. London.

## PROVINCIAL DIRECTORY

—OF THE—

### PRINCIPAL HOTELS IN ONTARIO.

PLACE.	NAME.	PROPRIETOR.
Arnprior	McPhee's Hotel	Arch. McPhee.
Arnprior	Campbell House	Mrs. J. Campbell.
Barrie	Barrie Hotel	Alfred Arnall.
Barrie	Queen's Hotel	A. W. Brown.
Belleville	Dafoe House	Huffman & Balkwell
Berlin	Commercial Hotel	J. S. Weaver.
Berlin	American House	H. C. Hilborn.
Brampton	Queen's Hotel	M. Deady.
Brantford	Kerby House	J. C. Palmer.
Brantford	Commercial Hotel	H. T. Westbrook.
Brighton	Snider House	Peter Snider.
Brockville	St. Lawrence Hall	Amos Robinson.
Brussels	Tecumseh House	John Campbell.
Caledonia	Union Hotel	E. T. Hind.
Chatham	Garner House	John Garner.
Clinton	Commercial Hotel	Jas. Moore.
Clinton	Rattenbury House	J. Rattenbury.
Cobourg	The Arlington	W. B. Chamblis.
Collingwood	Central Hotel	Thos. Collins.
Collingwood	Globe Hotel	J. Rowland.
Collingwood	Anglo-American Hotel	J. Winters.
Colborne	Globe Hotel	H. Hicks.
Cornwall	American House	A. J. Maley.
Cornwall	Ottawa Hotel	Geo. Ross.
Cornwall	Commercial Hotel	A. B. McDonald.
Dunnville	Mansion House	Mrs. Pigeon.
Elora	Commercial Hotel	T. Biggar.
Galt	Imperial Hotel	Isidore E. E. Eby.
Gananoque	Provincial Hotel	A. M. & R. H. Gamble.
Guelph	Wellington Hotel	Watts & Brookless.
Guelph	New Western Hotel	John Fielding.
Harriston	Collison House	John Collison.
Harriston	Bingham's Royal Hotel	J. R. Bingham.
Hamilton	Dominion Hotel	Thomas Armstrong.
Ingersoll	Daly House	
Kempville	Burrill House	W. Burrill.
Kincardine	Royal Hotel	J. Miller.
Kingston	British American	A. Davis.
Kingston	Windsor Hotel	Martin O'Brien.
Kingston	City Hotel	Arch. McFaul.
Listowell	Grand Central Hotel	T. & G. Rolls.
Listowell	Commercial Hotel	Jas. Stewart.
London	Tecumseh House	McGaw, Winnet & Moore.
London	Grigg House	Sam'l Grigg.
London	City Hotel	J. & J. McMartin.
Lucknow	Whitely House	R. J. Whitely.
Milton	Wallace House	John Wallace.
Millbrook	Dominion Hotel	J. E. Norris.
Mitchell	Hicks' House	John T. Hicks.
Morrisburg	Sherman House	W. H. Sherman.

SUN LIFE ASSOCIATION CO.—ASSETS ABOUT \$100,000,000. SURPLUS ABOUT \$600,000.  
INCOME ABOUT \$200,000

HOTELS.

Mount Forest	Queen's Hotel	W. Roberts.
Napanee	Campbell House	Dorland & Menbery.
Norwich	Brady House	Phelps & Sons.
Orangeville	Paisley House	John Paisley.
Orangeville	Gordon House	W. J. Middleton.
Orangeville	Queen's Hotel	H. Crowder.
Orillia	Orillia House	John Kelly.
Orillia	Russell House	P. W. Finn.
Ottawa	Windsor House	S. Daniels.
Ottawa	Russell House	J. A. Gouin.
Ottawa	City Hotel	A. Cushing.
Ottawa	Grand Union Hotel	John Graham.
Oshawa	Central Hotel	W. B. McGaw.
Owen Sound	Queen's Hotel	Hicks Bros.
Owen Sound	Coulson House	Thos Spiers.
Owen Sound	American Hotel	A. Leslie.
Paisley	Hanna House	D. D. Hanna.
Paris	Windsor House	James McDonald.
Perth	Allan House	I. C. Grant.
Perth	Hicks Hotel	Wm. Hicks.
Pictou	Royal Hotel	Mottahed & Son.
Port Colborne	McNeil House	C. McNeil.
Port Hope	St Lawrence Hall	Wm. Mackie.
Petrolia	Corey House	G. T. McKay.
Port Perry	Walker House	W. Haslam.
Pembroke	Ottawa Hotel	J. Copland.
Pembroke	Metropolitan Hotel	Jones & Co.
Prescott	Daniel's Hotel	H. H. Bromley.
Port Hope	Queen's Hotel	A. Adams.
Prescott	Revere House	J. S. Huntingdon.
Port Stanley	Fraser House	Wm. Fraser.
Sarnia	St Clair House	F. W. Baker.
Seaforth	Commercial Hotel	Alex. Davidson.
Seaforth	Queen's Hotel	Mrs. Thos. Stephens.
Shelburne	Jennings' Hotel	T. Jennings.
Simcoe	Dean Hotel	J. S. Dean.
Simcoe	Battersby House	John Dixon.
Smith's Falls	Butler House	Mrs. H. C. Butler.
St Catharines	Russell House	John Fox.
St Catharines	Grand Central Hotel	John McArthur.
St Catharines	Welland House	Carroll & Graves.
St Marys	National Hotel	James Clark.
St Thomas	Hutchinson House	Capt. Alex. McBride.
Stratford	Commercial Hotel	T. Hagarty.
Stratford	Mansion House	J. Merner.
Stratford	Royal Exchange Hotel	Holliday & Sanson.
Stratford	Windsor	H. H. Greer.
Strathroy	Queen's Hotel	M. B. Woodbury.
Thorold	Welland House	H. W. Winslow.
Tilsenburg	Royal Alfred Hotel	A. Cowan.
Tilsenburg	Queen's Hotel	Merrill & Son.
Toronto	Queen's	McGaw & Winnett.
Toronto	Rossin House	Mark F. Irish.
Toronto	American Hotel	Wm. Mackie.
Toronto	Shakespeare Hotel	John A. O. Grady.
Wattford	Baker House	H. O. Baker.
Welland	Dexter House	E. Hoover.
Whitby	Ontario House	John Leslie.
Whitby	Royal Hotel	G. W. Ramsy.
Woodstock	Commercial	John Forbes.
Waterford	Commercial Hotel	Henry F. Teuter.
Windsor	Crawford House	C. C. Green.

CHINGALESE PREVENTS THE HAIR FROM FALLING OUT.

**SMOKE**

M. H. LAWSON'S

**L. AND M. CIGAR**

MANUFACTURED

**SOUTH-WEST COR. KING AND TALBOT STS.,**

**LONDON, ONTARIO.**

ENGRAVING.

ENGRAVING.

**R. WM. BROOKE,**

**General Engraver!**

FITZGERALD'S BLOCK, UP-STAIRS,

**Is Prepared to Execute Wedding and Visiting Cards, Private and Professional Door Plates, Family Crests, Coats of Arms, Masonic Emblems and So icety Badges to Order; Monograms a Specialty.**

**WORKMANSHIP UNEXCELLED in CANADA.**

**171 DUNDAS STREET, LONDON, ONT.**

# WEST END HOUSE!

77 DUNDAS STREET, LONDON.

## JOHN GLEN,

MERCHANT TAILOR,

Has pleasure in announcing that he has engaged, owing to increasing business, an experienced NEW CUTTER from Toronto, who will be found fully up in his profession, and able and willing to please customers. I would also call special attention to my superior SCOTCH TWEEDS, suitable for Winter and Spring wear.

Orders for evening dress suits made up in latest styles and on short notice; also Sporting and Livery Suits a specialty.

Your favors solicited.

JOHN GLEN, 77 Dundas St.,

London, Canada.

# PORTRAITURE IN CRAYON

—BY THE ARTIST OF THE FAMOUS—

## “BISHOP HARRIS” PORTRAIT

And of other well-known subjects, can be had at short notice

## LIFE SIZE

Copied from Photographs, Ambrotypes, &c. &c. Changes made in dress, if desired. Also, Portraits from Life, on application to the Artist.

# E. A. CROSSMAN,

STUDIO: 328 YORK ST., LONDON.

12 Prizes at Provincial Exhibitions, and 3 Medals from the States.

ESTABLISHED IN 1861.

## J. H. LEBLANC,

IMPORTER AND MANUFACTURER OF

# Ostrich and Vulture Feathers.



DIPLOMA 1880 & 1881.

By a New Process Feathers can be Dyed in all Light Shades of Color in less than Five Minutes.

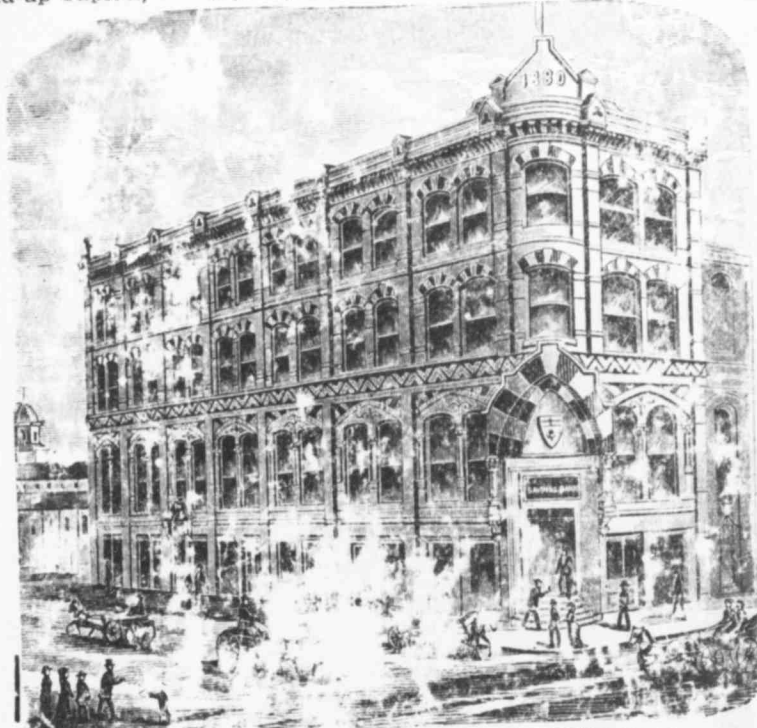
Wholesale Houses and the Trade Solicited on the Most Favorable Terms.

Price List per Letter on application.

FACTORY AND DEPOT: 547 CRAIG STREET,  
**MONTREAL.**

# ONTARIO LOAN & DEBENTURE CO'Y OF LONDON.

Paid-up Capital, - \$1,000,000. | Reserve Fund, - \$225,000.



**SAVINGS BANK BRANCH. INTEREST PAID ON DEPOSITS.**  
**Money Lent on Mortgage Security.**  
 WM. F. BULLEN, Manager.

**SCHULenburg MFG. Co.**

**AND BILLIARD TABLES**  
 57 DUNDAS ST. W. & RANDOLPH STREET  
 TORONTO, MICH. & WINDSOR, ONT.